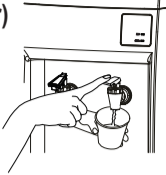


## 4. Before You Start

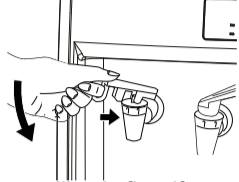
### ■ Cold Water Faucet (Blue Lever) and Hot Water Faucet (Red Lever)

Press the Blue Lever for Cold Water and Red Lever for Hot Water respectively. Place a cup directly below a faucet, and depress the correct lever be careful using the hot water. Even when a bottle is empty, Cold Water is available, for a small volume, but hot water is not available when the bottle is empty.

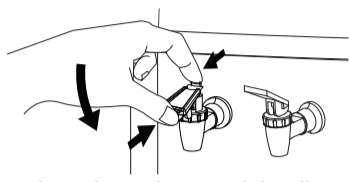


### How to use Child Lock Lever

TYPE 1



TYPE 2



Hot water will only flow if you press the bottom lever inwards toward the dispenser at the same time as you depress the lever.



#### Cautions

When the hot water comes out, be careful not to burn yourself. Do not allow the children to use the dispenser unsupervised.

### ■ Temperatures of Cold Water & Hot Water

- Cold Water (Configured: 5°C ~ 12°C)  
You may change the temperature of Cold water using the Cold Water Thermostat. However, it is already adjusted to the appropriate temperature, so you don't have to set the temperature again. Do not touch the Cold Water Thermostat during normal use.
- Hot Water (Configured : 80°C ~ 90°C)  
You may not change the temperature of Hot Water. It is fixed.

### ■ If you do not use for a long time.

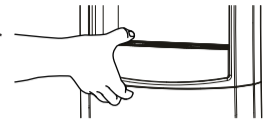
If you do not use the dispenser for a long time, unplug the power cord and empty the tank. If you leave the dispenser unplugged for a long time, the water quality may be adversely affected. Make sure to empty the Cold Water Tank & Hot Water Tank. For the details, refer to the Maintenance in chapter 5.

4

## 5. Maintenance

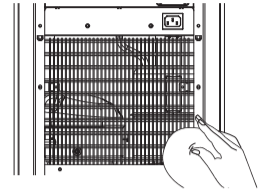
### ■ Case / Drip Tray

Case: Clean the dispenser using a soft damp cloth, at no time use abrasive cleaning materials or implements. Once the soiled parts of the dispenser have been cleansed, dry using a soft cloth.  
Drip Tray: Clean the Drip Tray and then wipe off with a neutral detergent and a soft cloth.



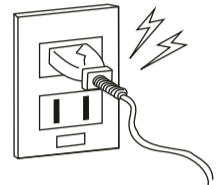
### ■ Radiation Condenser

A radiator is mounted on the back of Dispenser. If it is too close to a wall, or when the radiator gets covered in dust, the cooling efficiency will be impaired. Please clean the dust off with a soft brush or vacuum cleaner. This should be done regularly.



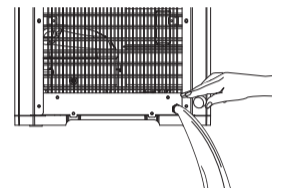
### ■ Check the Power Cord / Plug

Check to see that the power cord is not damaged or overheating, and also that no heavy objects are placed on it. Failure of the power cord could lead to fire or shock hazards. Please frequently check.



### ■ Leakage of Tank

If there are any leakages, drain the Cold Water through Cold Water Faucet. Drain the hot water by removing the cap of Hot Water Drain Valve.



#### Cautions

Before draining hot water, wait one hour after turning power off to allow water to cool down. Otherwise, you may be burnt by hot water.

5

## 6. Trouble and Troubleshooting

Please check the following items prior to asking for repair

Troubles	Things to check	Troubleshooting
Water does not come out (Cold Water & Hot Water)	Is the air inside the Tank removed completely?	Press and hold the lever until the water comes out through Hot Water Faucet.
Cold water does not come out	Is the power cord unplugged?	Check the power cord.
	Is the power appropriately supplied? Has the circuit breaker tripped?	Check the Distribution board.
	Is the capacity for producing cold water exceeded by your demand? Is the remaining cooling time too short?	Reduce consumption to within capacity specified for the dispenser.
	Is the temperature too high?	Install in a place where the air is well circulated. Do not expose to direct sun light.
	Is there a dust on the radiation condenser?	Clean the radiation condenser mounted on the back.
Hot water does not come out	Is the back of the dispenser too close to a wall?	Install with 15cm separated from a wall. Reinstall to allow the radiation condenser to be cooled down.
	Is the power cord unplugged?	Check the power cord.
	Is the power off? Is Circuit Breaker closed?	Check the plug board.
	Is the capacity for producing hot water exceeded by your demand?	Reduce consumption to within capacity specified for the dispenser.
	Is hot water switch turned off?	Turn on Hot Water Switch mounted on the back.
Dispenser is leaking	Is either the Hot or Cold faucet leaking?	Is the faucets are loose, firmly fasten the faucets.
	Is the Hot Water Drain leaked?	Firmly fasten the cap of Hot Water Drain.
	Is the water condensed on the surface of Tank?	Install the dispenser in a cool place.
Noise	Is the making a vibrating noise?	Make sure that it is installed on a level solid horizontal surface.
	Is the dispenser in contact with a wall or other products?	Keep the designated space away from a wall or other products.

6

## Repair & After Sales service

Unplug the power cord and then contact our representative from whom you purchased the dispenser.

### ● Please inform us of following information ●

- (1) Name (Company Name) and Address
- (2) How to contact the staff in charge of the dispenser
- (3) Details of problems encountered.



\_\_\_\_\_